

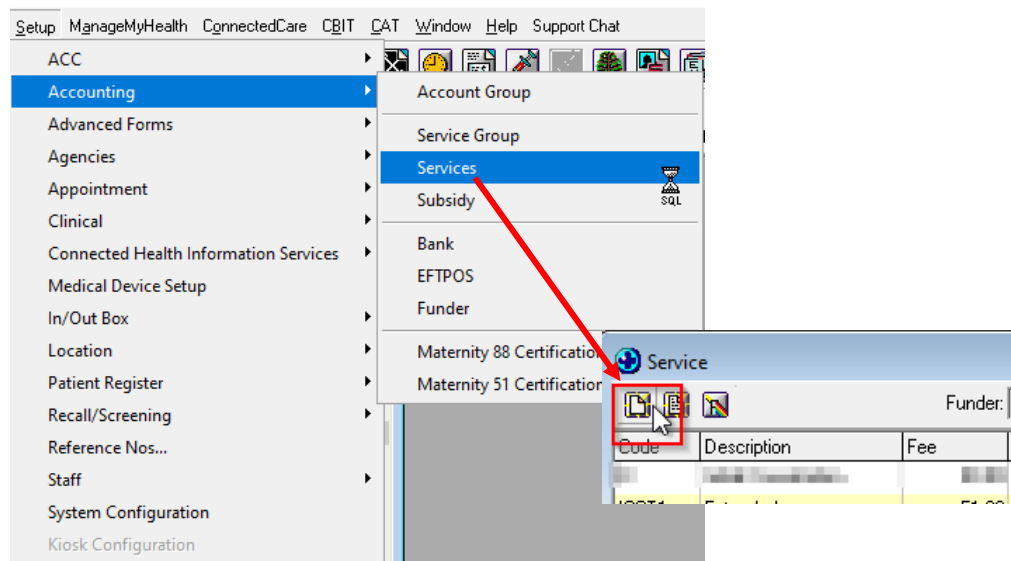
ONE POINT LESSON

ADDING NEW SERVICE CODES IN MEDTECH

1. In MT32

Set Up Tab:

- Accounting
- Services
- Add new service



In MTE

Options:

- Accounting>
- Services
- Add new service



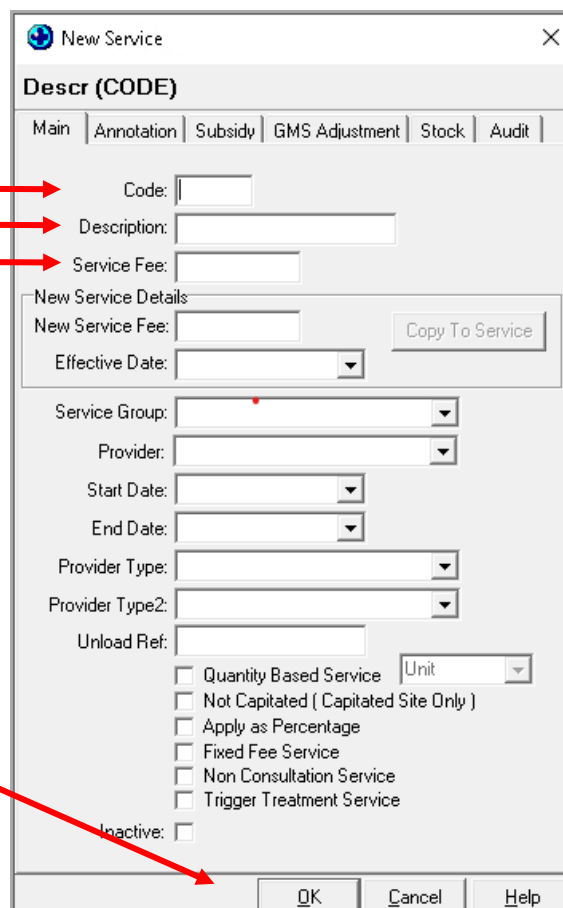
2. In "New Service" box:

Main Tab:

- Add the "Code"
- Add "Description"
- Add "Service Fee"

Click OK

Create a new service for each individual service code.



New Service

Descr (CODE)

Main | Annotation | Subsidy | GMS Adjustment | Stock | Audit

Code:

Description:

Service Fee:

New Service Details

New Service Fee:

Effective Date:

Service Group:

Provider:

Start Date:

End Date:

Provider Type:

Provider Type2:

Unload Ref:

☐ Quantity Based Service

☐ Not Capitalated (Capitalated Site Only)

☐ Apply as Percentage

☐ Fixed Fee Service

☐ Non Consultation Service

☐ Trigger Treatment Service

Inactive: ☐